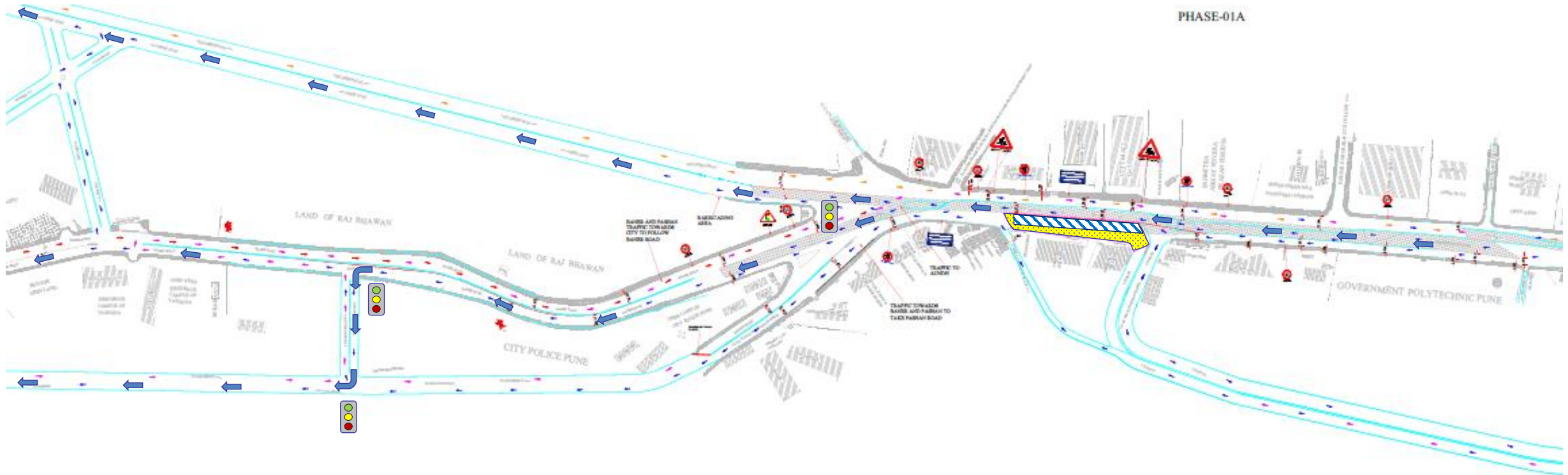


University Flyover (Option-2)

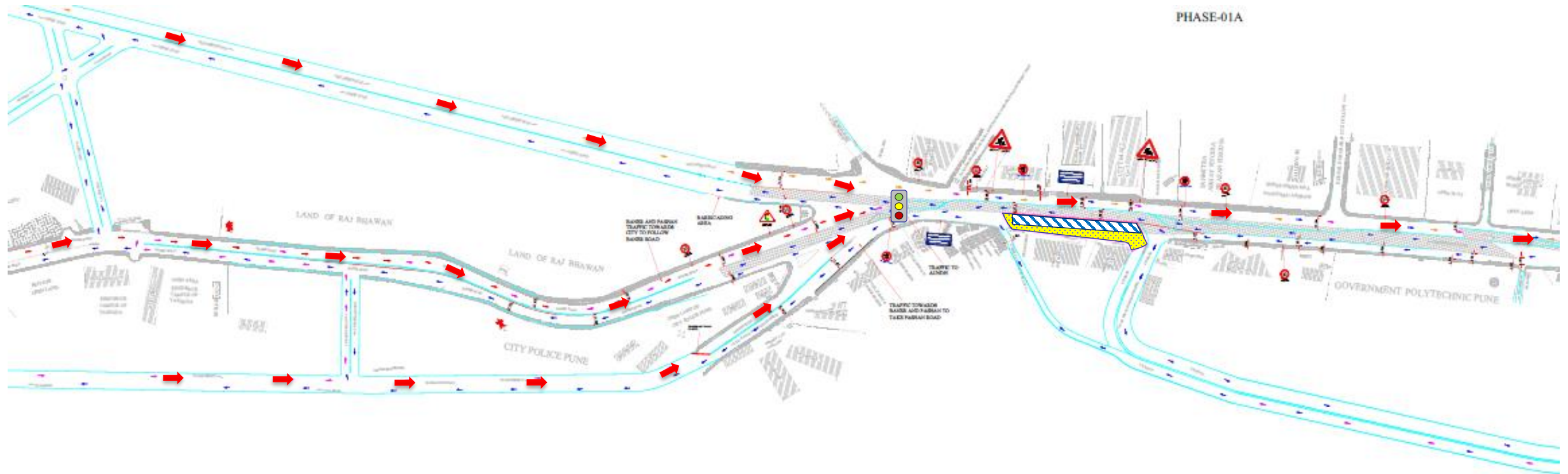


1. Traffic from Shivaji Nagar to Aundh will follow the Aundh route
2. Traffic from Shivaji Nagar to Baner will follow the Baner Route
3. Traffic from Shivaji Nagar to Pashan should take the Baner Route then take left turn at Abhimansri Road and then merge to Pashan Route

 Flyover

 Barricading

(Traffic Diversion from Aundh, Baner & Pashan to Shivaji Nagar)

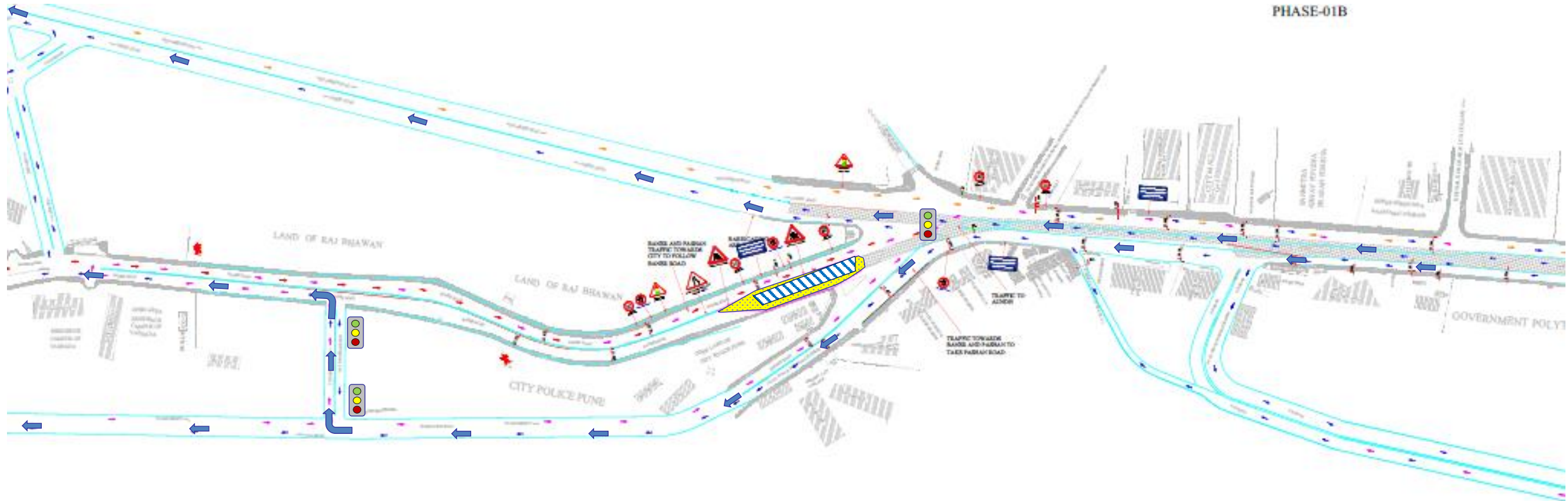


1. Traffic from Pashan to Shivaji nagar will follow the Pashan Route
2. Traffic from Baner to Shivaji Nagar will follow the Baner Route
3. Traffic from Aundh to Shivaji Nagar will follow the Aundh Route

 Flyover

 Barricading

(Traffic Diversion from Shivaji Nagar to Aundh, Baner & Pashan)



PHASE-01B

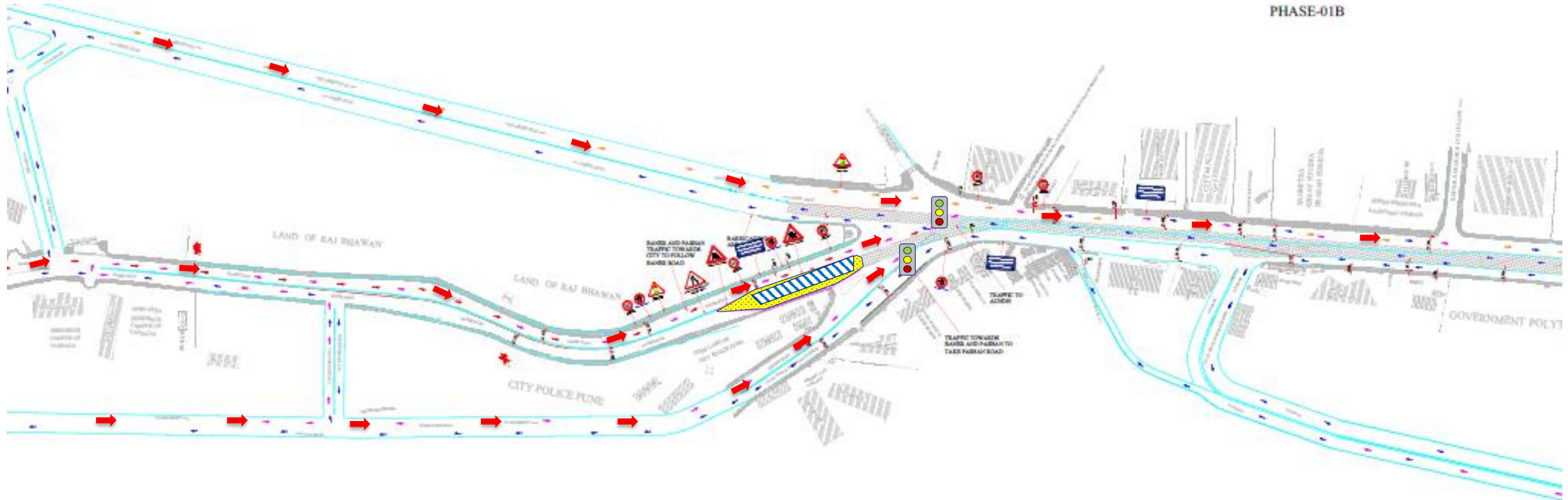
 Flyover

 Barricading

1. Traffic from Shivaji Nagar to Aundh will follow the Aundh route
2. Traffic from Shivaji Nagar to Baner Should take the Pashan Road and take a right turn after City Police and then Merge to Baner Route
3. Traffic from Shivaji Nagar to Pashan will follow the Pashan Route

Phase 1B (Option-2)

(Traffic Diversion from Shivaji Nagar to Aundh, Baner & Pashan)

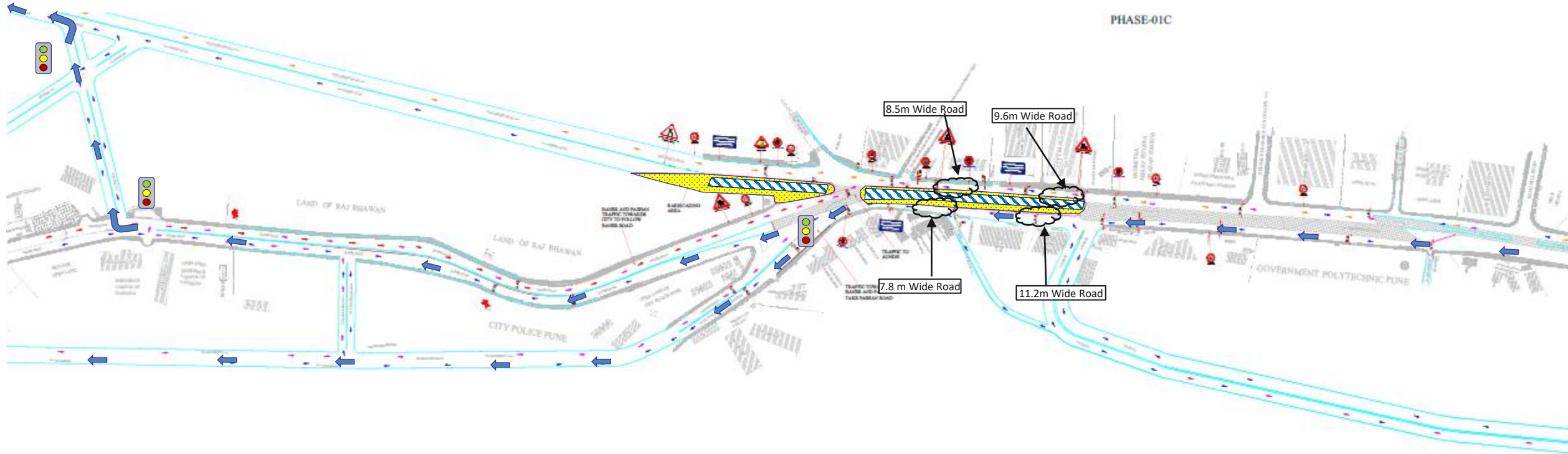


1. Traffic from Pashan to Shivaji nagar will follow the Pashan Route
2. Traffic from Baner to Shivaji Nagar will follow the Baner Route
3. Traffic from Aundh to Shivaji Nagar will follow the Aundh Route

 Flyover

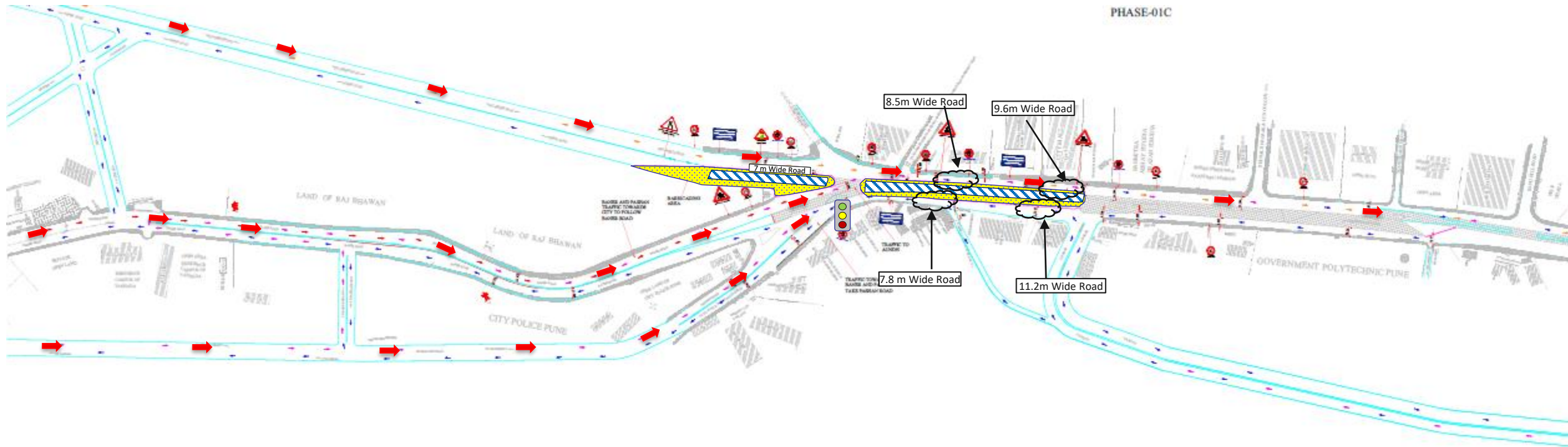
 Barricading

(Traffic Diversion from Shivaji Nagar to Aundh, Baner & Pashan)



1. Traffic from Shivaji Nagar to Aundh should take the Baner Route and the Take a right turn to Aundh Route
2. Traffic from Shivaji Nagar to Baner will follow Baner Route
3. Traffic from Shivaji Nagar to Pashan will follow the Pashan Route

(Traffic Diversion from Aundh, Baner & Pashan to Shivaji Nagar)

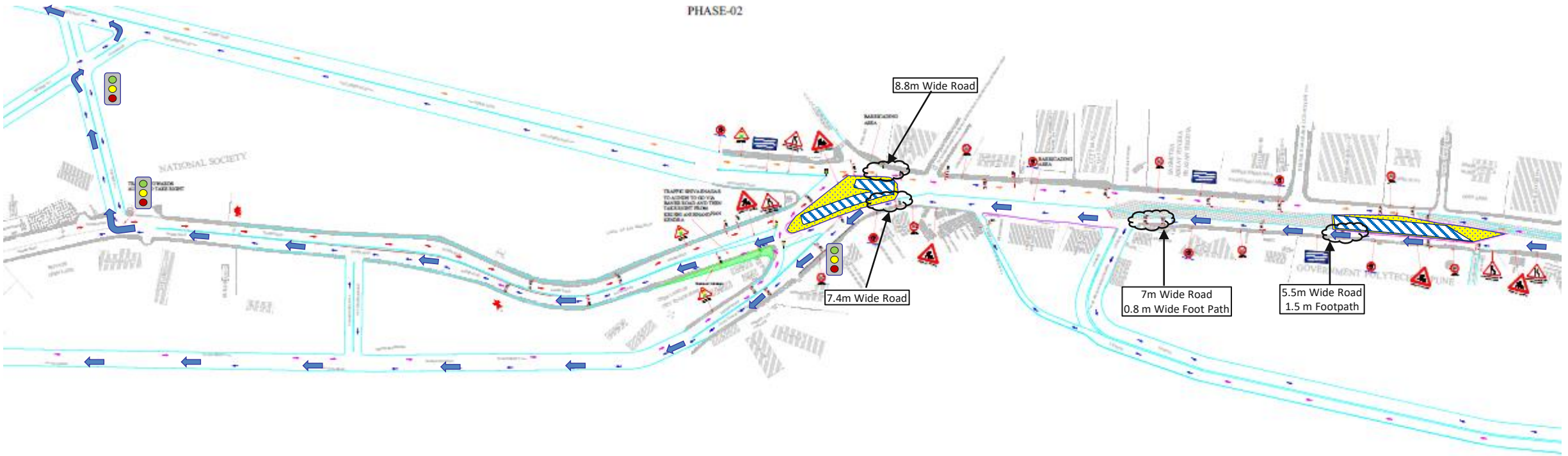


1. Traffic from Pashan to Shivaji nagar will follow Pashan Route
2. Traffic from Baner to Shivaji Nagar will follow the Baner Route
3. Traffic from Aundh to Shivaji Nagar will follow the Aundh Route

 Flyover

 Barricading

(Traffic Diversion from Shivaji Nagar to Aundh, Baner & Pashan)

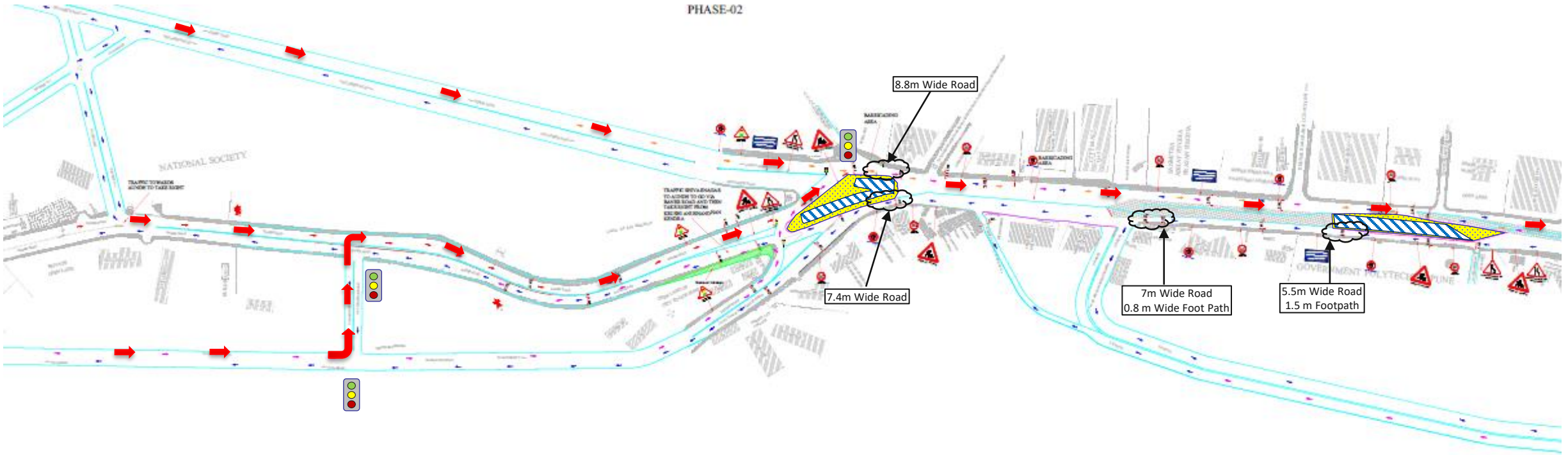


1. Traffic from Shivaji Nagar to Aundh should take the Baner Road and then take a right turn at ITI Road Aundh and then merge to Aundh Road
2. The Traffic towards Baner Road will follow the Baner Road
3. The Traffic towards Pashan Road will follow Pashan Road

 Flyover

 Barricading

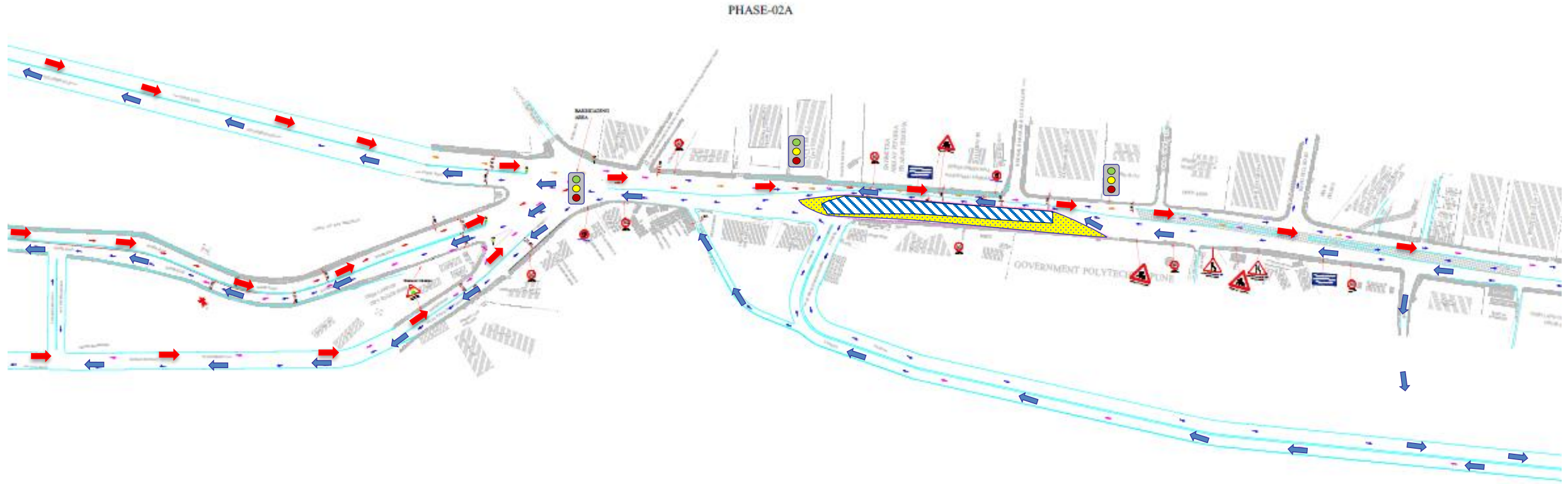
(Traffic Diversion from Aundh, Baner & Pashan to Shivaji Nagar)



1. Traffic from Pashan to Shivaji nagar should take left turn to Abhimansri Road and will merge into Baner Route
2. Traffic from Baner to Shivaji Nagar will follow the Baner Route
3. Traffic from Aundh to Shivaji Nagar will follow the Aundh Route

 Flyover

 Barricading

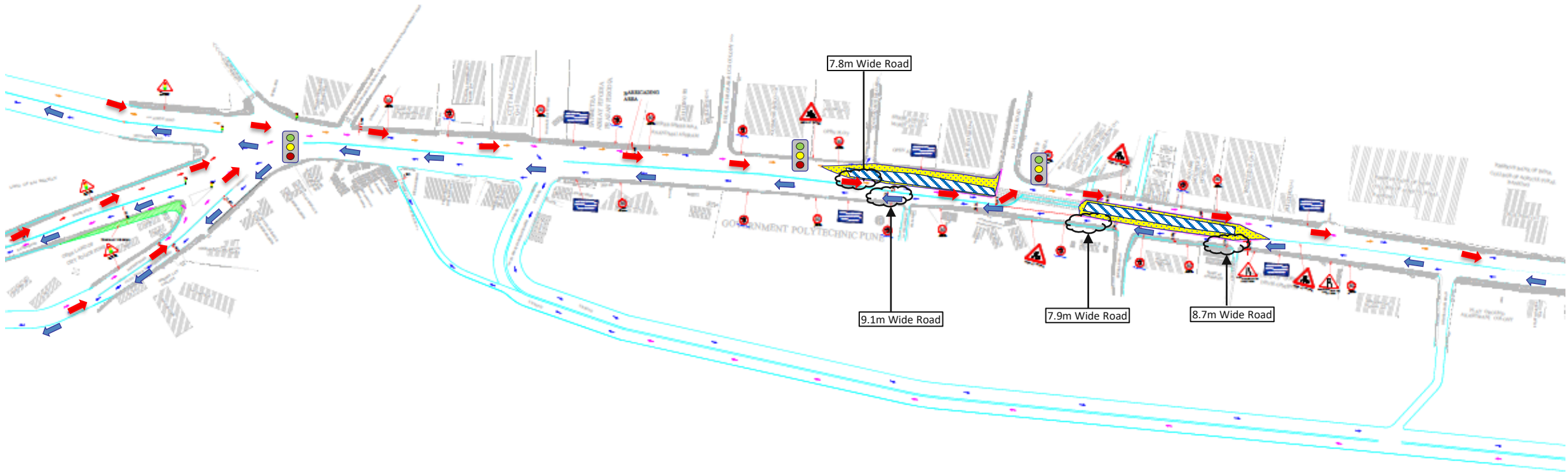


 Flyover

 Barricading

1. Traffic from Shivaji Nagar to Aundh will follow the Aundh route
2. Traffic from Shivaji Nagar to Baner will follow Baner Route
3. Traffic from Shivaji Nagar to Pashan will follow the Pashan Route

PHASE-03

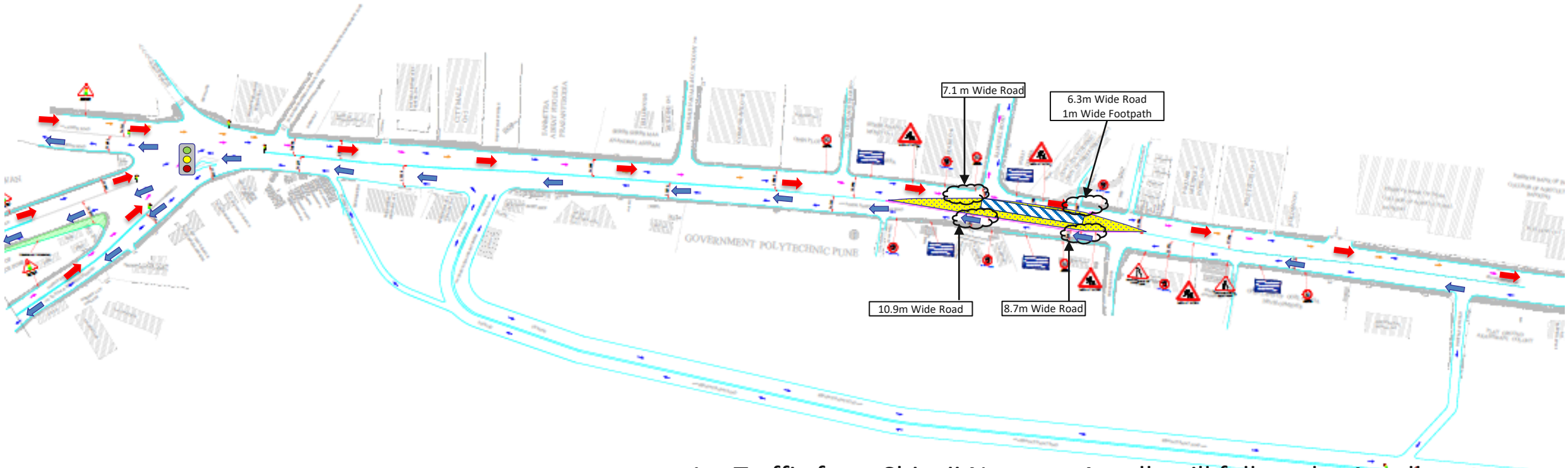


 Flyover

 Barricading

1. Traffic from Shivaji Nagar to Aundh will follow the Aundh route
2. Traffic from Shivaji Nagar to Baner will follow Baner Route
3. Traffic from Shivaji Nagar to Pashan will follow the Pashan Route

PHASE-04



 Flyover

 Barricading

1. Traffic from Shivaji Nagar to Aundh will follow the Aundh-route
2. Traffic from Shivaji Nagar to Baner will follow Baner Route
3. Traffic from Shivaji Nagar to Pashan will follow the Pashan Route